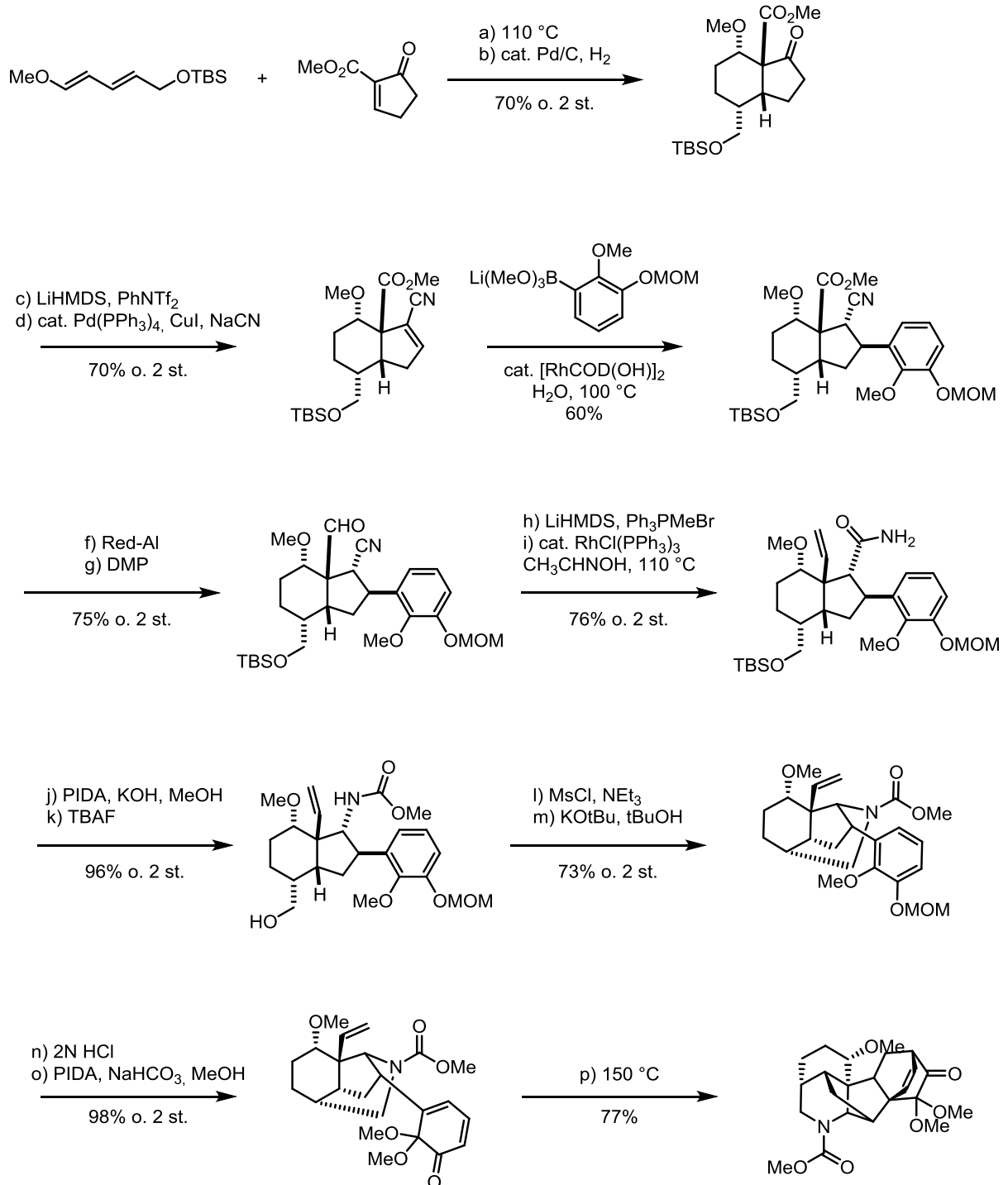
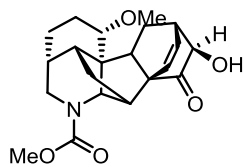


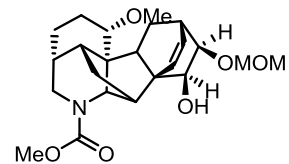
**Problems 03/05/16**



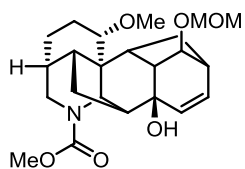
q) NaBH<sub>4</sub>  
r) TFA, H<sub>2</sub>O  
87% o. 2 st.



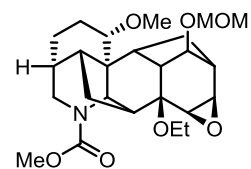
s) MOMCl, DIPEA  
t) NaBH<sub>4</sub>  
87% o. 2 st.



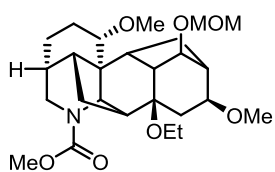
u) Tf<sub>2</sub>O, pyridine  
v) DBU, DMSO, 120 °C  
55% o. 2 st.



w) *m*-CPBA  
x) NaH, EtI  
76% o. 2 st.



y) Cp<sub>2</sub>TiCl<sub>2</sub>, Mn  
z) NaH, Me<sub>2</sub>SO  
66% o. 2 st.



aa) KOH  
ab) Ac<sub>2</sub>O  
ac) LiAlH<sub>4</sub>  
ad) HCl  
54% o. 4 st.

